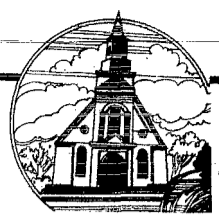




**WSC's softball home opener Saturday**  
WSC's softball team opens at home Saturday after finishing fourth in Oklahoma last week — see page 6a.



**Wakefield church on historical list**  
Salem Lutheran Church in Wakefield has made the National Register of Historic Places — see page 4a.

# THE WAYNE HERALD

ONE HUNDRED SEVENTH YEAR      WAYNE, NEBRASKA 68787, THURSDAY, MARCH 17, 1983      THIS ISSUE — TWO SECTIONS, 22 PAGES      NUMBER FORTY-SEVEN

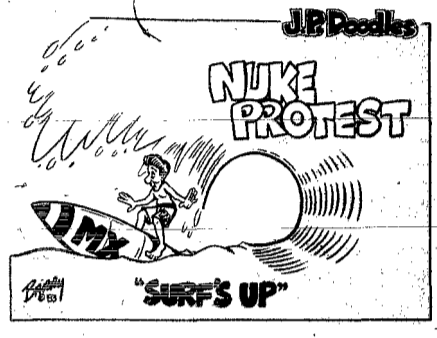
## Nuclear freeze forum

"In two years, Aug. 6, 1985, we will recognize the 40th anniversary of the atomic bombing of Hiroshima.  
"There can be no victors in a nuclear war."  
Those were the opening remarks of Allen O'Donnell, director of programs at Wayne State College, during a Public Affairs Institute Tuesday afternoon at the college.  
**SPEAKING BEFORE** a crowd of nearly 500 area high school students, college students and community residents, O'Donnell said the nuclear freeze campaign "came upon us a few years back," and that the cold war may best be represented in the nuclear arms race.  
O'Donnell was moderator for a panel forum in Wayne State's Ramsey Theatre to debate the issue of "A Nuclear Freeze: Plausible or Not."  
Taking part in the panel discussion were Dr. Leo Sartori, Professor of Physics at the University of Nebraska-Lincoln and a former advisor to the SALT II negotiations in Geneva, Switzerland; Dr. Russell Palmer, chairman of the department of philosophy and religion at the University of Nebraska-Omaha; Lt. Col. James E. Laney, representing the Strategic

Air Command and United States Air Force; and Stephen Kane of the Public Affairs Division of the U.S. Department of State.  
**IN HIS** opening comments, Palmer told the audience gathered for the program that the question is whether or not the United States can afford to freeze with its nuclear arsenals at the current level.  
"We are talking about 16,000 megatons of nuclear weapons in the current arsenals of both the United States and Russia," said Palmer.  
Palmer compared one megaton to that of one million tons of TNT, enough to fill a freight train 300 miles long.  
"All of the fire power of World War II amounted to just three megatons," Palmer went on to explain, "and that includes the two atomic bombs dropped on Japan."  
Palmer added that the current combined arsenals of both the United States and Russia total enough fire power to equal that of 6,000 World War II.  
"Even if we have a nuclear freeze we still have all this fire power in our present arsenal."  
"THERE IS something we can do," emphasized Palmer.

## WSC Public Affairs Institute panel ponders national nuke nemesis

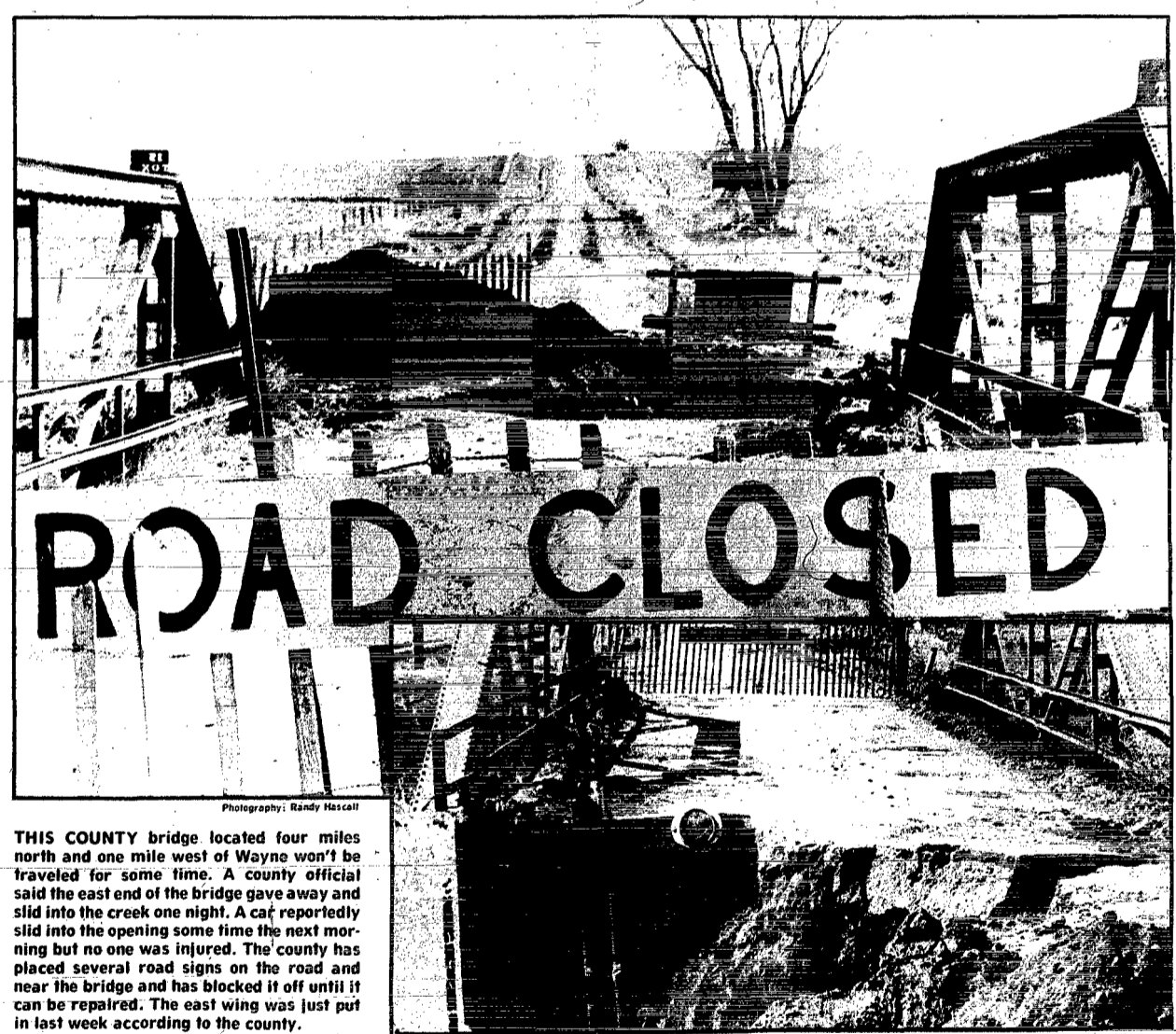
"That is to call a halt to the nuclear arms race."  
Palmer added that a bilateral freeze is essential and would be verifiable by existing means of verification.  
"We are already monitoring what goes on in the USSR," said Palmer, "and it could even be argued that a total freeze would be easier to verify just because both sides would stop where they are now, and any activity would mean a violation."  
Palmer also cited nuclear parity as a reason to call for a freeze and said the United States and Russia are roughly equal in strategic nuclear power.  
"Both nations already have more than enough nuclear weapons to destroy each other many times over," Palmer pointed out.  
"The question is not who is ahead, the question is how much is enough."  
"It is naive to think we can keep on escalating the nuclear arms race and not have nuclear war as a result."



See FORUM, page 9a

## Highway widening work set for Laurel

Some Laurel residents may see a large part of their front yards turned into concrete as part of a highway improvement project.  
The Nebraska Department of Roads has announced its plans for a significant facelift of Highway 15 from Laurel to the Concord Spur.  
The most significant change will be the widening of the roadway from its current 24 feet to 42 feet within the Laurel city limits.  
**CURRENTLY** being considered by the Laurel City Council is the sale of about one-fifth of an acre of land south of the city swimming pool and the Lions Club Park along the roadway to the State.  
City administrator L. J. Mallatt said he is recommending the sale of land because he sees little detrimental effect and some possible landscaping benefits.  
Mallatt said the land, which the city is unable to mow now because of the steep slope, creates an eyesore.  
The State, said Mallatt, would partially fill in the area, creating a gentler slope which could be mowed and trimmed.  
**MALLATT SAID** although three trees will be lost along the roadside, they will be replaced at the state's expense.  
Mallatt said it is also possible that a small portion of the Cedar View Golf Course may be filled in along the south side of the road, depending on a decision by the Cedar View board of directors.  
Several intersections along the highway will be moved back, according to Mallatt, and new, brighter street lighting will be installed to meet state specifications.  
Plans also call for curbs to be installed on both sides of the highway.  
**HIGHWAY 15** will remain a two-lane highway, but with shoulders nine feet wider than the current ones.  
Mallatt said although an exact construction date has not been set, he expects work to begin within the next two years.



Photography: Randy Hascall

**THIS COUNTY** bridge located four miles north and one mile west of Wayne won't be traveled for some time. A county official said the east end of the bridge gave away and slid into the creek one night. A car reportedly slid into the opening some time the next morning but no one was injured. The county has placed several road signs on the road and near the bridge and has blocked it off until it can be repaired. The east wing was just put in last week according to the county.

## Wayne to get grant

The city of Wayne will receive a \$1.5 million grant from the Environmental Protection Agency to upgrade its sewer system, Rep. Doug Bereuter's office announced Tuesday.  
According to a Bereuter aid, Wayne will receive \$1,537,500 in federal funds for a sewage treatment project. The state and local governments are required to contribute \$256,250 each, bringing the total cost of the project to \$2,050,000.  
Wayne's current sewage system doesn't meet federal standards and the city is required to make changes. A bio-disc operation will be set up near the Wayne sewer lagoon, which is located east of town. That new operation will meet environmental standards.  
**A STRUCTURAL** building will be constructed north of the lagoon and will house a laboratory, refining equipment and storage facilities. Rotating discs will be used to process waste at the plant.  
City Administrator Phil Kloster explained that the city is switching from a 100 percent lagoon-type system to a mostly mechanical system. Man-made equipment will break down most of the sludge. The lagoon presently provides a natural breakdown.  
Wayne Mayor Wayne Marsh said the city applied for the grant "a long time ago" when it was learned that Wayne's sewer pond didn't meet federal standards.  
Kloster said the scheduled bid opening is April 26. Bids will be opened that day and the results will be presented to the City Council at its regular meeting that night.  
**THE CITY'S** share of the total expense will be paid through revenue bonds that are paid off through bonds collected on water and sewer bills, Kloster said.  
The federal money accounts for 75 percent of the estimated cost of the project while the state and city are required to pay 12 1/2 percent of the costs each.

## Village's volunteer rescue squad gets \$500

A Winside native who died at the Wayne Care Center at age 89 has left \$20,000 to Providence Medical Center of Wayne.  
Virginia Chapin McCain died Sunday, Feb. 27. Her last will and testament provides Providence Medical Center with a sum of \$20,000 with interest to be used for upkeep and maintenance of the Chapin Room. According to the will, the use of the funds shall be determined by the Benedictine Sisters and the governing board of PMC.  
Hospital administrator Marci Thomas said the Chapin Room at the hospital was named after Mrs. McCain following her

donation of furniture and funds for the room and two administrative offices when the hospital was built.  
**THE WILL** of Virginia Chapin McCain also gives \$500 to the Winside Fire Department Rescue Unit to assist in the purchase of needed equipment.  
A sum of \$7,000 has been left so that interest can be used to assist a Winside High School graduate in the study of veterinary medicine specializing in the care of small animals.  
The recipient is to be chosen by the superintendent of the school and the local

veterinarian of Winside. The candidate for the scholarship must have a proven love for small animals and promise to practice in a city no larger than Wayne.  
The scholarship is established in memory of Mrs. McCain's pet dog which awakened her in time to escape a fire at her Winside home in 1977.  
**THE REMAINDER** of Mrs. McCain's estate is bequeathed to four beneficiaries. Ten percent will be given to St. Anselm's Episcopal Church of Wayne in the form of an endowment under which the interest may be used by the church.

**VIRGINIA CHAPIN** was the last direct descendant of the prominent Chapin family which settled in the Winside area and for whom Chapin Township was named.  
She married and divorced Arthur McCain of Springfield, Mo. and later returned to Winside. She donated her parents' Indian artifact collection to Wayne State College and it is now on public display at U.S. Court Library.  
In 1978 Mrs. McCain set up a \$3,000 endowment for a Montie V. Chapin music scholarship to Wayne State College for piano or organ students. The scholarship was

Ten percent will be given to the Benedictine Sisters of Kansas City with no restrictions as to use.  
Forty percent of the remaining estate will be left to the University of Nebraska-Lincoln Foundation as an endowment to be used exclusively for research and study in order to ascertain the cause and cure of osteoporosis, a disease from which Mrs. McCain suffered.  
Creighton University will be given the other 40 percent of the remaining estate for the same purpose.

established in her mother's memory.  
Her father, Arthur Chapin, bought approximately 1,700 acres near Winside in 1880. Included in Mrs. McCain's estate, according to Kenneth Olds, Wayne attorney and personal representative, are 240 acres in Wayne County; 640 acres in Sheridan County, North Dakota; 160 acres in Yuma County, Colorado; and her Winside residence.  
Mrs. McCain is a graduate of Winside and Wayne high schools. Her body was donated to the Nebraska Anatomical Association of Omaha for medical research. Survivors include cousins, nieces and nephews.

# Winside native's will bequeaths \$20,000 to PMC















## Brass ensemble to perform

The Eastman Brass Ensemble, a five-member group from Rochester, N.Y., will perform at Wayne State College on Thursday, March 24, according to James Day, professor of music at Wayne State.

The Eastman Brass Ensemble tours from the Eastman School of Music in Rochester, and this is one of the few times for this group to appear in Nebraska. Day noted.

The performance will begin at 8 p.m. in Ramsey Theatre, located in the Val Peterson Fine Arts Center on the Wayne State campus.

Admission is \$3.50 for adults and \$1.50 for high school students and younger. WSC faculty, staff

and students will be admitted free of charge, as will holders of WSC activity passes.

THE FIVE members of the ensemble include Barbara Butler, trumpet; Charles Geyer, trumpet; Verne Reynolds, French horn; Jon Marcellus, trombone, and Cherry Beaugard, tuba.

The ensemble was established in 1964, and has toured extensively in the U.S. and Canada, as well as several countries in Central America under the sponsorship of the U.S. State Department.

The program is the last in Special Programs series on the Wayne State campus for the 1982-83 school year.

## 'Programs of Excellence'

# Grants totaling \$3,000 awarded to WSC groups

Wayne State College Vice President Ruby Pedersen recently announced the awarding of nearly \$3,000 in grants to several groups at Wayne State College.

The grants, which are funded through the Wayne State Foundation and range from \$300 to \$500, were awarded as part of the "Programs of Excellence" project.

They are used to help bring or continue special programs that would otherwise not be able to be funded by Wayne State.

David Ley, vice president of the Wayne State Foundation, was on hand to present the checks.

O'Donnell/Cliff Ginn) - for the Public Affairs Institute. Each spring and fall the Social Science division sponsors a program on a topic of current national interests. Monies are used to help bring recognized authorities on each particular subject to the Wayne State campus.

Math/Science Division (Dr. Charles Maier) - for the Nebraska Statewide Arboretum. This program concentrates on campus beautification and environmental control. In the past years, hundreds of shrubs and trees of a wide variety have been located on the Wayne State campus.

Math/Science Division (Carl Rump) - for the Fred G. Dale Planetarium. Every semester three to four programs are of

ferred free of charge at the planetarium. Many area schools take advantage of these programs by bringing busloads of students to the planetarium.

Math/Science Division (Jewell Schock) - for the Audubon Wildlife Film Series. This series, which has been offered for the past couple of years, presents films by noted naturalists about various phases of wildlife from around the world. The naturalist who produced the film is on hand to describe the film and answer questions.

Humanities Division (Herb Meinert and Régis Tucci) - for campus radio and television programs. The programs of campus-wide interest are produced by and for Wayne State students through the campus radio station

KWSC-FM and through the campus television station, KWSC-TV. International Education (Charles Kay) - to assist in coordination and planning the logistics for WSC's annual international programs. This ongoing program has, during the last 10 years, taken hundreds of people to Europe. Four programs are being offered this summer by Wayne State.

Institutional Advancement (Adrie Nab) - to assist in the development of the institutional advancement program. The institutional advancement concept is new to Wayne State and will soon be implemented to coordinate activities in areas of admissions and student recruitment, college relations, alumni relations, and financial aid.

## Wayne State representing Denmark

Sixteen Wayne State College students will represent Denmark in this year's Model United Nations program, according to Allen O'Donnell, associate professor of political science at Wayne State.

The students will leave on Sunday, March 27 for New York City, and return on Sunday, April 3.

They will be staying at the Grand Hyatt Hotel, and will combine their work with the sights of the "Big Apple."

STUDENTS WILL receive three hours of credit for the trip, O'Donnell said. As representatives of Denmark, the students will play the roles of professional diplomats, he added.

In preparing for the conference, the students have been meeting once a week since Feb. 16 to familiarize themselves with the materials and information needed for the week.

Students also will meet with their "real world" counterparts, the Danish diplomats, on the morning of March 30.

This year, the students will have the opportunity to visit the Metropolitan Museum of Art, which will be displaying "The Vatican Art Exhibition: Papy and the Arts." This is the first time that these artworks have been taken out of the Vatican.

AMONG THE 16 students going on the trip are three WSC foreign

exchange students. They are Edith Okubanjo of Nigeria, a junior majoring in business management; Valentina Tobon of Columbia, a freshman communication arts major; and Diana Waris of Finland, a junior business management major.

Other participants include Charles Burney, a junior social science major from Harrington; Catherine Cameron, a senior from Blair majoring in English and history; Lowell Christensen, a junior majoring in public administration from Pilger; Bradley Davison, a junior public administration and criminal justice major from Stanton.

Also, Kent Fairbairn, a senior majoring in political science and

minoring in history from Treynor, Iowa; Leslie Grant, a junior sociology major with a psychology minor from Tallahassee, Fla.; Brian Holcomb, a junior social science major from Coleridge; Doug Janousek from Schuyler, a junior journalism and English major; Lisa Klichler, a political science major and Spanish minor from Fremont; Donald Kneiff, a sophomore criminal justice major from Ponca; Lee Kurpgewell, a senior social science major from Leigh; Darla Sorensen, a speech communications and English major from Stapleton; and Tracy Trumble from Bellevue, a senior business administration/secretarial major.

## Job, career search strategies topic of Wayne State workshop

Students and academic advisers at Wayne State College will be able to attend special workshops this month on "Building Job and Career Search Strategies."

The workshops will be Tuesday, March 22, on the WSC campus, and will be presented by Mr. Paul Curro & Associates of Omaha.

A WORKSHOP for students

will be at 1 p.m. March 22 in the Nebraska Room of the WSC Student Center. Students will be "coached" in deciding on careers and locations, transferring skills to related job fields, and in what

Curro calls the "hidden job market."

The 1 p.m. workshop also is open to the public free of charge.

In a related workshop, faculty and staff members who serve as academic advisors will learn how to help students implement job and career search strategies.

The advisors workshop will be from 3 to 5 p.m. March 22 in the Plains Room of the WSC Student Center.



## Mutual of Omaha tour

A GROUP OF STUDENTS from Wayne State College recently toured the home office facilities of Mutual of Omaha and United of Omaha. Accompanied by their instructor, the students viewed modern business equipment and systems in operation and received a firsthand look at how their studies apply to actual working situations. Students also toured the companies' unique underground addition. The three-level office building, which is capped with a massive glass dome, has produced energy savings up to two-thirds the comparable costs for an aboveground facility. During the tour, students also learned of the variety of career opportunities available in the insurance industry.

## Faculty profile

Dr. Charles R. Maier likes Wayne State College because "it's small enough that we can do an excellent job of teaching the beginning science course, and yet we have the time that we can give students the personal attention they sometimes need."

A WSC faculty member since 1968, Maier is a professor of biology and holds an undergraduate degree in biology and a master's degree in botany, both from Emporia State College in Emporia, Kan.

MAIER WENT on to earn his doctoral degree in plant pathology from Oregon State University in 1959. He conducted his doctoral research on downy mildew of hops and its response to antibiotics.

Before coming to Wayne, Maier was a research plant pathologist at New Mexico State University at Las Cruces from 1958 to 1968. There he conducted mostly field research on fungus diseases of cotton and field beans.

Between 1958 and 1978, Maier published 45 research articles on a variety of topics.

He has been honored by membership in Beta Beta Beta, Lambda Delta Lambda, the Society of the Sigma Xi, and Phi Kappa Phi. He also has been listed in a number of honorary publications including "Who's Who in the Midwest" and "American Men and Women of Science."

ON CAMPUS, Maier co-sponsors the Biology Club and the



Dr. Charles Maier WSC chapter of Lambda Delta Lambda.

An evergreen farm from which he sells Christmas and landscape trees keeps Maier busy in his spare time, and he is active in the Northok Antique Auto Club and the Wayne Lions Club.

Maier spends some time pitching horseshoes as well, as is evidenced by the fact that he has been WSC's intramural horseshoe champion on six occasions.

He and his wife, Barbara Jeanne, have three children, Tom, 24, Timothy, 21, and Pamela, 17.

## campus briefs

### Christian Athletes banquet

The Wayne area chapter of the Fellowship of Christian Athletes (FCA) will host a banquet at Wayne State College on Saturday, March 26.

Former Nebraska football star Todd Brown, a four-year letterman at the spill end position for the University of Nebraska-Lincoln, will be the featured speaker.

Tickets to the banquet, which begins at 7 p.m. in the WSC Student Center, are available for \$5 and may be purchased in advance from Wayne State College or Wayne High School FCA members. Tickets also will be sold at the door for \$5 each on a first-come, first-serve basis.

For further information or to order tickets, contact any FCA member or WSC Athletic Director Ron Jones at (402) 375-2200, ext. 301.

### Butler attending inauguration

Dr. Aaron Butler of Wayne has been asked by President James B. Applebury of Pittsburg (Kan.) State University to represent him at inaugural ceremonies for President Ed Elliott of Wayne State College on March 19.

Butler is an alumnus of the university.

Dr. Applebury is unable to attend the inauguration because of a Kansas Board of Regents meeting the same day.

## SHAPE UP FOR SUMMER!!

### JOIN THE NEW AEROBICS CLASS

Beginners Welcome

Each Monday and Thursday - 3rd Floor, Wayne State Adm. Bldg. - 5:15 p.m. to 6:15 p.m.

**Deb Nicholson, Instructor**  
Certified by Rhythmic Aerobics Inc.

Classes from March 21-April 28  
Only \$17 (less than \$1.50 per class)

Pre-Register by Calling:  
Wakefield, 287-2493 Evenings or come to first class

**PERSONALIZED Playing Cards**  
The Wayne Herald

**Karen, I Still Love You Willie**

**MORTON Salt Pellets**

BEST FOR YOUR WATER SOFTENER

Buy 9 Bags 10th BAG FREE

Wayne True Value V&S Variety

116 West 1st Phone 375-2223

VS Variety Stores

### LIQUIDATION SALE Continues

When you need repairs, don't forget our BOLTS, LAG SCREWS, GATE HINGES, 100's of V-BELTS and PULLEYS, some sizes of NAILS, and BIKE TIRES and BIKE PARTS. 100's of other items.

A few auto tires still left and EVERYTHING AT CLOSEOUT PRICES.

HOURS: Mon.-Fri. 12:30-5:00 Saturdays 9:30-4:00

**COAST TO COAST**

Mel and Ruth Elston 277 Main Wayne 375-3360





# IT'S OUR Grand Opening

THURSDAY — FRIDAY — SATURDAY — SUNDAY

Be Sure To Register For Our Door Prizes.

MARCH 17 — 20

**RAVE SOFT PERM**  
  
**\$5.29**

**Norelco Chic CURLING WAND**  
 Model CC16  
  
**\$4.99**


Rebate Coupon From Norelco ~~\$2.00~~  
**\$2.99**  
 Net Price

**FREE PRIZES**

- Cornwall Scent
- Choice of 1 \$60 Dakin Stuffed Animal
- 10 Rolls Kodak 12 Exposure Film & Developing
- 2 Fox Photo Albums
- Man's Digital Seiko Watch
- Choice of 1 Medium Smurf, Smurfette or Papa Smurf
- Bonnie Bell Spray Cologne and Body Lotion Set
- Bonnie Bell Makeup Package
- Odyssey II Video Game

**NORELCO ROTA TRACT RAZOR**  
 HP1602  
  
**\$39.95**

**CURITY Super soft puffs**  
 for cosmetic, baby care and home uses  
  
 260's **79¢**

**FREE GIFTS**  
 For Everyone While They Last!!  


**STICK-ON CLOCK**

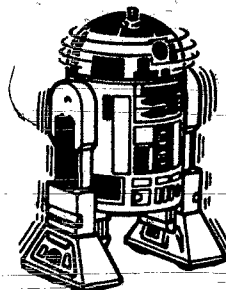
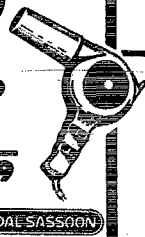
Shows hours and minutes. Changes every 2 seconds to show month and date.

**2.99**  


**VIDAL SASSOON**

Vidal Sassoon Professional 1200 Turbo, Styling HAIR DRYER Model VS-208

~~\$9.49~~  
 Rebate Coupon ~~\$2.00~~  
 Net **\$7.49**



**STAR WARS SHAMPOO**  
 10-Oz.  
 Darth Vader, R2 D2, Luke Skywalker, Yoda  
**\$3.49**

**STAR WARS SOAP**  
 Luke Skywalker, Yoda, Princess Leia, Darth Vader  
**\$1.39**

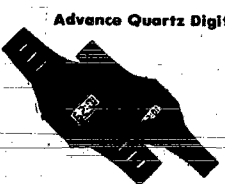
**STAR WARS BUBBLE BATH**  
 10-Oz.  
 Yoda, Darth Vader, Princess Leia, Chewbacca  
**\$3.49**

**UNICAP M**  
  
**\$4.99**  
 120 Tablets For The Price Of 90!


**ASPERCREME**  
 3.9-Oz.  
**\$1.90**

**TRIPLE ANTIBIOTIC FIRST AID OINTMENT**  
 Mycitracin 1-Oz.  
  
**\$2.39**

**1/2 Price**  
 Cachet, Wind Song, Chimero  
**GIFT SETS**

**Advance Quartz Digital "No Frills" WATCH**  
 12 Mo. Warranty Men's or Women's  
  
**\$3.69**

Over 100 Specials... Throughout The Entire Store! And, Don't Forget The Specials In The "LOFT" — Sav-Mor's Gift Shop!

**MYLANTA**  
 Effective Antacid/Anti-Gas  
  
 great taste fast action/low sodium  
**\$2.39/12 OZ. LIQUID**

**FREE COFFEE & COOKIES ALL DAY THURSDAY**



SEE The "Smurfs" Love At First Sight!!



Sav-Mor Pharmacy  
**Developing & Printing**  
 (C41 Process Only)

12 Exposure	\$1.99
15 Exposure	\$2.39
24 Exp. (110, 126)	\$3.89
24 Exp. (135)	\$4.29
36 Exposure	\$5.59

Effective March 17-18-19-20 Must Have Coupon

We use flash paper for a good look.

Code 2520

Guaranteed Film Developing

**ODYSSEY<sup>2</sup>**  
 A NEW LOW PRICE.



**\$79.95**

**NO COUPONS... NO REBATES... NO GIMMICKS.**

Bring your family into the world of computer video game technology with an Odyssey<sup>2</sup> computer-type keyboard... at a new low price. Use the keyboard to program your own mazes and play games with words, logic, math and spelling. Play exciting arcade-style video games. The Odyssey<sup>2</sup> console comes complete with joysticks, a solo auto speedway game, a competitive road race and an exciting word game. Choose from over 50 games and optional voice module—hurry in today!

**ODYSSEY<sup>2</sup>**

**Sav-Mor Pharmacy**

1022 Main  
 Wayne, NC 28787

**HOURS:**  
 Monday-Friday 8:30-6:30  
 Thursday 'til 9  
 Saturday 8:30-6:00  
 Sunday 11:30-5:00

### Lending specialist can make a difference.

Especially at times like these. High interest rates call for right credit. And credit that works for agriculture is our specialty at the Production Credit Association.



Our loan officers are professionals. They understand the unique requirements of today's farming and ranching operations. And they can work with you to help you get the most from every credit dollar. It's their job to help you plan and organize a sound, constructive credit program. So if your plans call for sound operating credit, call on PCA. We're the specialists in agricultural credit. And the kind of service we can offer could make a real difference. Call or stop by today!

**Case**

**NEW HOLLAND SALES - PARTS SERVICE**

**RED CARR IMPLEMENT**

Hwy. 15 North Wayne, Nebr. Phone 375-2685

See Us for

- Crushed Rock • Sand
- Concrete • Gravel

"Pick Up or We Deliver"

**MUSKER CONCRETE & GRAVEL CO.**

Wayne (375-1990) Wisner (529-6123)

**EARTH MOVING OF ALL TYPES:**

- SOIL CONSERVATION
- WATERWAYS
- TERRACES
- DAMS

Call: **Milo Meyer Construction Inc.**

Wayne, Nebraska

Office: 375-3440 Home: 375-3730

**Soil Conservation Service**

307 Pearl Ph. 375-2733 Wayne, Nebraska

Public Service Message Courtesy of The Wayne Herald

**More Profit-Minded Growers Choose Westeel Storage Bins**

Westeel is one of the world's largest manufacturers of grain storage bins. For a lot of good reasons. We provide our Westeel dealers with products, services and pricing that combine to assure more sales, more profits.

**WESTEEL Carhart LUMBER CO.**

105 Main St. Wayne, Nebr. Phone 375-2110

**LOWER ELKHORN NATURAL RESOURCES DISTRICT**

**Now is the time for construction of conservation practices**

Landowners, if you have been considering putting soil conservation practices on your land, this is the time to do it! If you are enrolled in the set aside or PIK program, you can idle the land that needs the soil conservation practices. In many cases, these will be the problem areas which you would want to set aside first anyway.

By locating your PIK acres where you want to do conservation work, you are eliminating scheduling problems with a contractor. The work can be done anytime before frost next winter. This may even help you get a more attractive bid on the work from contractors.

This is also a good year for conservation work because of the assistance available to you:

- The Soil Conservation Service is available for technical assistance, designing and staking out conservation practices on your land.
- ASCS offices have their usual allocation of funds available to you through the ACP fund up to a limit of \$3,300 for cost-sharing conservation practices.
- The Lower Elkhorn NRD offers cost-share to landowners for dams and terrace systems.
- Nebraska Water Conservation Program funds are available through the NRD for cost-sharing. Any of these three funds can be used in combination for larger projects.

In addition to these forms of assistance, USDA has begun a new approach to controlling soil erosion and water quality problems. It is called "Targeting." In other words, additional technical assistance and cost-share funds are provided to areas which are targeted as critical soil erosion areas. Twenty-nine counties in the eastern third of Nebraska fall into this category. Additional SCS personnel are being assigned to this area to work with landowners on design and layout of conservation practices. A special ACP fund of \$1,030,750 has been set aside for these 29 counties, so \$33,250 is available in each county. This fund is to be used in mini-Long Term Agreements (LTA's) with landowners. Under these LTA's, a landowner may receive up to \$3,500 cost-share annually for one to five years for constructing conservation practices.

For convenience and assistance there may never be a better time to put needed conservation practices on your land than now. Contact your local SCS office for information.

Twenty-nine counties in eastern Nebraska have been "Targeted" for extra technical assistance and cost-share funds to control critical soil erosion problems.

**PIONEER BRAND SEEDS**

PREPAY BY **MARCH 25, 1983**

FOR \$3.00 A BAG

**DISCOUNT PLUS**

FREE BUCKSKIN COAT WITH 25 BAGS

FREE BUCKSKIN CAP WITH 10 BAGS

See or call: **Roberts Feed & Seed**

106 Pearl 375-1374

Tractors, Combines, Planters, Loaders, Spreaders, Hay Equip., Tillage Equip.

John Deere, Farmhand, Gehl, Dual, Stanholt, Servis, Bush-Hog.

**NORTHEAST NEBRASKA'S SUPERSTORE FOR ALL YOUR FARM EQUIPMENT NEEDS**

**LOGAN VALLEY IMPL., INC.**

East Hwy 35 Wayne

375-3325

Olson and Lockwood Center Fleet Sales And Service

**PURE BRED SPF DUROCS**

Nebraska Accredited SPF Herd No. 89

Performance and Backfat Tested

Top Bloodlines

Nebraska Certified Pseudorabies and Brucellosis Free Herd No. 126

Bears and Gifts Available at all Times

**GREENVIEW FARMS**

Wayne, Nebr. 402-375-1498 2 Miles North Hwy 15 1 Mile West

DICK SORENSEN (Owner)

Judy - Stone - Aaron Schuett

**ELECTRIFY!**

Conserve fuels in short supply!

**"LIVE AND FARM BETTER ELECTRICALLY"**

**Wayne County Public Power District**

Scrving Wayne and Pierce Counties

Home of Axial-Flow Combines, Tomorrow's Combine, Today!

International 50 Series Tractors

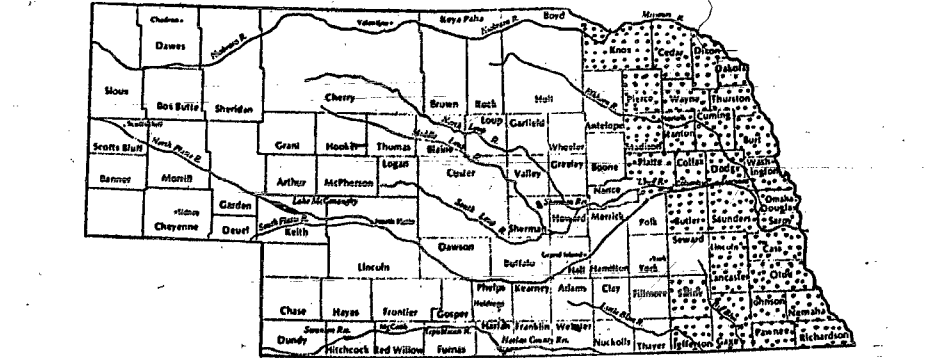
135-185 PTO Horsepower

Performance Productivity Reliability

The Most Modern and Complete Line of Farm Machinery.

Get the Red Edge.

**Midland EQUIP INC WAYNE**



Research at the University of Nebraska Field Lab at Mead indicates that a properly designed windbreak can boost yields and more than pay for itself.

The study shows that under dryland conditions, corn yields increased 20% in the protected area of the windbreak, soybeans 18% and wheat 22%. Windbreaks used in the research project consisted of two rows of trees utilizing various combinations of red cedar, pines, green ash and cottonwood. Area of protection was considered to be up to 440 feet from the windbreak or roughly 20 times the height.

On a quarter-section of ground a farmer could establish a two-row windbreak of red cedar on the north, west and south sides of the field and 5 alternating single and double tree rows east-west every 440 feet across the field. This design would require 15 acres in the quarter section and an establishment cost of \$2700.

Based on \$2.50 per bushel for corn, \$4 for wheat and \$6 for soybeans, and the utilization of ASCS cost-share the payback period would be in 12 years. The revenue lost for no crop production in the area of the windbreak was considered. Total net revenue on the quarter section based on the previous assumptions is close to \$37,000 over a 50 year period.

Since planting windbreaks is shown to increase production and income, it should be obvious that removing windbreaks is a costly practice, not only initially, but in lost production and wind erosion of soil.

**Windbreak system aids crop yields**

**Last chance to order trees**

The tree planting season is a few weeks away. Of the 3.5 million Clarke-McIntyre trees available last November 1, several of the species available in the program are sold out or running low. Order trees now if you are thinking about planting a windbreak, woodlot, wildlife habitat area or for other purposes. Seedlings are available for \$28 per hundred and can be ordered at your local SCS, county extension or NRD office. All NRD's in northeast Nebraska have low cost tree planting and weed control services available.

**Preparation for tree planting**

With cooperation from the weather, tree planting may begin by mid to late March. Preparation for planting your trees, however, should have begun last fall. Especially when trees are to be planted into former grass land, the area should be fall plowed. This is to insure a good kill on the grass, stop moisture loss from the soil, and make a mellow planting bed in the spring. Weed or grass competition and poor planting conditions are the greatest causes of young tree mortality.

If fall plowing was not done, you should be sure to get the area ready this spring and work it again a few days before planting to get rid of small weeds. After planting, keeping the trees free of weeds and grass will not only improve survival, but can increase growth by 100%. In other words, you can have an effective windbreak in half the time if you put some time and effort into it.











SHOP THESE  
ST. PATRICK'S  
SPECIALS  
IN WAYNE

# SURE AND IT'S A \$avin' o' th

## THURSDAY — FRIDAY — SAT

### ST. PATRICK'S DAY SPECIALS

**\* BAILEYS IRISH CREAM \***

**\$13.99** 750 ml **\$10.49** 500 ml

*Save \$2.50* *Save \$2.40*

**THE ORIGINAL IRISH CREAM LIQUOR**

---

**CARLO ROSSI WINE**  
Vin-Rose — Rhine — Chablis

**\$3.29** 1.5 Liter

---

**KENTUCKY TAVERN** Straight Bourbon Whiskey **\$5.99** Liter

**PABST BLUE RIBBON** 12 Packs Warm or Cold **\$4.29**

**THE GEM** Wine • Liquor • Beer

Open Sunday Afternoons

### ST. PATRICK'S DAY FOOD SPECIALS

Prices Good March 17-22

**CORNED BEEF BRISKETS** **\$1.59** Lb.

**DRIED BEEF** **\$4.29** Lb.  
Scandinavian Style

**POTATO SAUSAGE** (Made from Irish Potatoes) **\$1.59** Lb.

**GREEN Bellies BACON** **\$1.59** Lb.

**WHOLE OR 1/2 HOGS** **\$1.07** Lb.

**Whole PORK LOINS** **\$1.35** Lb. 17-22 Lb. Avg.  
Includes Processing & Freezing

**Johnson's Frozen Foods**  
116 W. 3rd Wayne 375-1100

HOURS: Mon.-Fri. 8 a.m.-6 p.m. Saturday 8 a.m.-1 p.m.

### How to Catch a Grasshopper.

It's simple. Just walk in and say "I want Grasshoppers." The coolest, most colorful, most comfortable summer shoes anywhere.

**Wayne Shoe Co.**  
216 Main St. Wayne, NE 375-2065

Shoe prices: \$15, \$22, \$16, \$13, \$22, \$12

### Hurry 11.9% Financing Ends March 31

SEE THE REVOLUTIONARY ALL NEW 83 COUGAR AND T-BIRD IN STOCK.

Check These Recent One Owner Trade-Ins.

1982 FORD LTD, beautifully equipped and just 4,000 miles.  
1980 FORD F150 SUPERCAB, Ranger Lariat and loaded with options. 351, automatic, 27,000 miles. Beautiful!  
1981 CROWN VICTORIA, 4-door, has every option imaginable. An extremely elegant car.  
1981 FORD ESCORT, 3-door hatchback; stylish fuel economy in America's best selling car.

Don't Ever Buy A New Or Used Car Or Truck Until You Check With The No Bull Boys!

**Arnie's FORD-MERCURY**  
119 East 3rd Street Wayne, NE Phone 375-1212

### St. Patrick's Day VALUES

**BIG GE 17.2 cu. ft. NO-FROST REFRIGERATOR** Model TB170DE

**GE 2-SPEED WASHER WITH MINI-BASKET™ TUB** Model WWA70708

**GE HEAVY-DUTY AUTOMATIC DRYER** Model DDE500B

**GE DUAL WAVE™ MICROWAVE OVEN** Model JE210

**GE POTSCRUBBER™ 7-CYCLE DISHWASHER** Model GSD900

**GE WE BRING GOOD THINGS TO LIFE**  
**Doeschler Appliance**  
306 Main Wayne 375-5453

**2 1/2 INCH ASSORTED POTTED PLANTS** **69¢**

**4 INCH POTTED PLANTS** **\$1.19**

East Highway 35 Wayne, Nebraska

**PANIDA**  
AN EMPLOYEE OWNED COMPANY

SWANS' LADIES

One Day **SAINT PATRICK'S DAY BLITZ**

Thursday, March 17 9:00 - 9:00

**20% OFF** On All Cash Sales



# The Green



## TUESDAY MARCH 17-18-19

### PILLOWS

Made in Wayne By **RESTFUL KNIGHTS**

100% Polyester Filling

- Regular **\$4.95** Each
- Queen
- King

**Pillow (Seconds) \$3.00** Each  
King or Queen Size

**PERCALE WATERBED SHEETS \$19.95**  
Seconds in King and Queen sizes

**WATERBED SALE — Special Prices Now!**

Muslin Sheets	\$29.95	Percale Sheets	\$33.00
Satin Sheets	\$33.00	Percale Comforters	\$59.95

**Timberline Wood Products**

C135-24  
C110-24  
**\$2.69**

**VITAMIN C 500 mg.**  
100 Tablets **\$1.69**

**VITAMIN E 400 I.U.**  
100 CAPSULES **\$2.99**

**Kodak 4000 Disc Camera \$44.88**

Single Disc <b>\$2.19</b>	Twin Disc Pak 30 Exposures <b>\$3.99</b>
------------------------------	---

**ALL SUNGLASSES \$3.00 Off**

**GRIESS REXALL**

### WE'VE MOVED

Wall to Wall Decorating invites you to visit them at their new location — 215 Main — Lower Level

**LOTS OF BARGAINS**

**LEVEL LOOP TWEEDS \$5.95** sq. yd.

**CONGOLEUM Up To 60% Off** of the regular price

**CARPET SAMPLES 25¢ & 60¢**

SEE US FOR:  
• PAINT • WALLPAPER • CARPET • VINYL

### WALL TO WALL DECORATING

Lower Level of Timberline Building      Al & Donna Shufelt      215 Main Wayne, NE

### LUCKY YOU

WE'RE HAVING A ST. PATRICK'S DAY SALE

**SAVE**

**STEEL BELTED STRENGTH**  
Lifesaver XLM® Whitewall **\$52.95** P145/60R13 Plus \$1.64 F.R.T.

Size	Our Price	P.E.T.
P195/75R14	62.90	2.13
P205/75R14	68.90	2.34
P205/75R15	68.90	2.46
P215/75R15	71.90	2.39

**Belted for strength & toughness BELTED T/A 70 \$44.90** P185/70-13 Plus \$1.70 F.R.T.

Size	Our Price	P.E.T.
P205/70-14	\$1.90	2.23
P225/70-14	\$4.90	2.48
P225/70-16	\$4.90	2.42
P225/70-15	\$7.90	2.81

**Fredrickson Oil Co.**  
1 1/4 miles N. Hwy. 15 Wayne, NE  
Phone 375-3535 or Toll Free 1-800-672-3313

**BF Goodrich**

St. Patrick's Day is Just Ahead of:

### SPRING TIME

and Spring is Sports Time!

Come On Out And Buy Your **BALL GLOVES**  
Don't Forget Wayne Sporting Good's Relaxes All Ball Gloves!

**Now is The Time To Outfit Your Team!!**

- Softball & Baseball Uniforms
- Shoes • Balls • Socks
- Tape • We've Got It All and More

**WAYNE SPORTING GOODS**

HOURS:  
Monday, Friday 9:30 - 5:30  
Tuesday, Wednesday 9:30 - 5:00  
Saturday 9:30 - 4:00  
SUNDAYS 1 - 5

1 Mile East of Wayne Phone 375-3577

## Unmounted Diamond Sale

Thursday, Friday, Saturday 3 DAYS

**JUST ARRIVED!!**

### Diamond Mountings

We just received a shipment (in time for our sale) of Earrings, Pendants and Men's and Ladies Mountings. Several new looks and styles. Purchase a 1/10 Diamond at our sale or bring in your own unmounted diamonds — and you'll be able to see how they will look in the mounting of your choice.

Example of Sale Prices:

10 kt. Men's Ring Mountings	Start at <b>\$125*</b>
14 kt. Ladies Ring Mountings	Start at <b>\$100*</b>
14 kt. Earring Mountings	Start at <b>\$25*</b>
14 kt. Pendant Mountings	Start at <b>\$20*</b>

\*Stone setting charges are included in almost all mounting prices during this sale at the Diamond Center!

Unmounted Diamonds purchased because of an overstock directly from Harry Winston, New York — the world's largest producer of cut diamonds. The lowest price we've seen in years for 1/10 carat Diamonds!

### 1/10 Carat Unmounted Diamonds

Regular \$132 Each      Sale Priced **\$88.00** Each

OR Two 1/10 Carat Diamonds for just \$150 for both!!

Do you have an occasion coming up soon? A birthday, anniversary, Easter, even Mother's Day. Diamonds fit any gifting season.

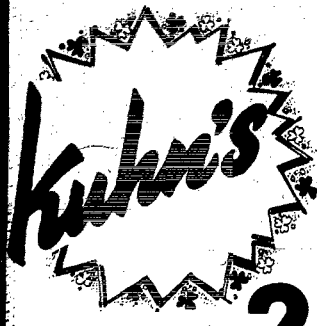
**The Diamond Center**  
211 MAIN  
PHONE 402-375-1904  
WAYNE, NEBRASKA 68787

**DIAMOND CLUB WINNER**

**SURE AND IT'S A**

# Savin' O' THE GREEN

Entire Stock Spring-Easter



Ladies Fashion

## Dresses

Regular and Half Sizes  
8 to 20 & 14 1/2 to 24 1/2

**25% OFF**



## Campus

Men's & Boys

## Sportswear

- Spring Shirts
- Nylon Jackets
- Kasha Lined Jackets
- Knit Shirts
- Short, Long Sleeves

**20% OFF**



Kuhn's Budget Basement

**Whirlpool HOME APPLIANCES**

**BONUS BUYS**

**SAVE BIG DOLLARS**

**Whirlpool Automatic Washer/Dryer**  
Models LA7680XK / LE5800XK

Large capacity washer features 4 automatic cycles plus bleach and fabric softener dispensers. 3-cycle dryer features 3 drying temps, no-iron care --or perm't press and knit setting.

**SAVE BIG DOLLARS**

**Buy Now! Offer Ends March 31, 1983 Buy Now!**

**Whirlpool**

## GREEN



are the Savings for St. Patrick's Day

1977 Olds Toronado Coupe	\$3350
1977 Mercury Cougar XR7	\$2850
1977 Ford LTD II 4-Door	\$1575
1976 Chevrolet Nova 4-Door	\$975
1975 Buick Opel Wagon	\$650
1974 Olds Cutlass Wagon	\$750
1981 GMC 1/2-Ton, 4 speed, air, 22,000 miles	\$5500
1977 Chevrolet 1/2-Ton, a.t., p.s.	\$2750
1974 Ford Ranger XLT, a.t., p.s., air	\$1750
1974 Dodge Van, customized	\$2350
1971 Ford 1/2-Ton, a.t., p.s., V-8	\$695
1973 Honda 350 Motorcycle	\$375
1981 Kawasaki 440 LTD	\$1110

**Ellingson MOTORS, INC.**

• CADILLAC • GMC • BUICK • PONTIAC •  
Phone 375-2355 Wayne, Mo. West 1st St.



Ladies

**Donnkenny**  
Bend to Fit Stretch Poly Gab

## Slacks

All Elastic Waist Band  
Asst. & Navy, Brown, Black

**\$12.90** Pair



McCall's — Simplicity  
**Patterns**  
Buy 2, Get 3rd One Free  
Equal Value or Less

County Fair  
**Craft Stuffing**  
100% Polyester  
**\$1.29**  
12-Oz. Bag



3 Days Only — Thurs.-Fri.-Sat.

**Farm Tire "SPECIALS" Priced To Sell & Ready To Go!**

**SAVE! SALE PRICED!**

**Our Best Selling Rear Tractor Tire**  
**TRACTION TORQUE**  
**\$238.00**

15.5x38, 6-ply, plus \$7.64 F.E.T.

**On America's Finest New Tractors**  
**POWER TORQUE**  
**\$348.00**

18.4x38, 6-ply, plus \$12.37 F.E.T.

**SAVE ON TRACTOR FRONTS**  
**TRIPLE RIB R/S**  
**\$37.50**

600x16, 4-ply, plus \$9.77 F.E.T.

**Service!**  
**Phone 375-2121**  
For Fast Professional On-Farm Tire Service

**All Tires In-Stock Priced To Fit Your Pocketbook**

**GOODYEAR**

**Coryell Derby Service**  
211 Logan Wayne Phone 375-2121

**Celebrate St. Paddy's Day with us!**

**ANCIENT**  
86 proof Bourbon  
Liter (33.8 oz.)  
**\$7.00**

**KESSLER**  
Liter (33.8 oz.)  
**\$6.75**

**OLD CROW**  
1.75 Liter  
**\$9.75**

**BLUE RIBBON**  
Closed Case — Warm  
**\$8.50** Cans

**SCHMIDT**  
Closed Case — Warm  
**\$6.75** Cans  
Dollar refund on every case of Schmidt.

**MANISCHEWITZ**

Cream Sangria 1/5	\$2.75
Cream White Concord 1/5	\$2.75
Cream Sangria 1.5 ltr.	\$5.50

REMEMBER: At the Jug all sale prices include tax.

**The 4th Jug**  
102 Main • Phone 375-9958

**YER IN CLOVER**

**FREE** Win A Trip To **Disney World**

Just Stop In And Test Drive A New Oldsmobile For 83 Register For One of 5 Free Trips to Disney World

Trip Includes:  
• Airfare for 4  
• Hotel accommodations for 4 for 3 days  
• Free passes to Disney World and Epcot Center

**FINAL CALL For 11.9% Financing**

On Any New Olds & Chevrolet Passenger Car or Chevrolet Light Truck. Offer Ends March 31. Come In and Talk To Us.

**Mike Perry**  
West Hwy. 35 Wayne, NE 375-3600

**LUCK O' THE IRISH**

How Lucky You Are To Be Able To Buy Top Quality

**GOODYEAR TIRES**  
...and at SPECIAL SALE PRICES throughout the Store

**Goodyear:**  
• FARM TIRES • TRUCK TIRES • PICKUP TIRES • AUTO TIRES

**TIRE UP THIS WEEK!!**

**M&S Oil Co.**  
419 Main Wayne Ph. 375-2811







